

# **DESIGNING ALFRESCO**

## **PLANNING AN OUTDOOR FLOWER SHOW**

**BY SECOND DISTRICT DIRECTOR, GAIL BERTI**  
**AT THE MAY 3, 2021 ANNUAL MEETING**

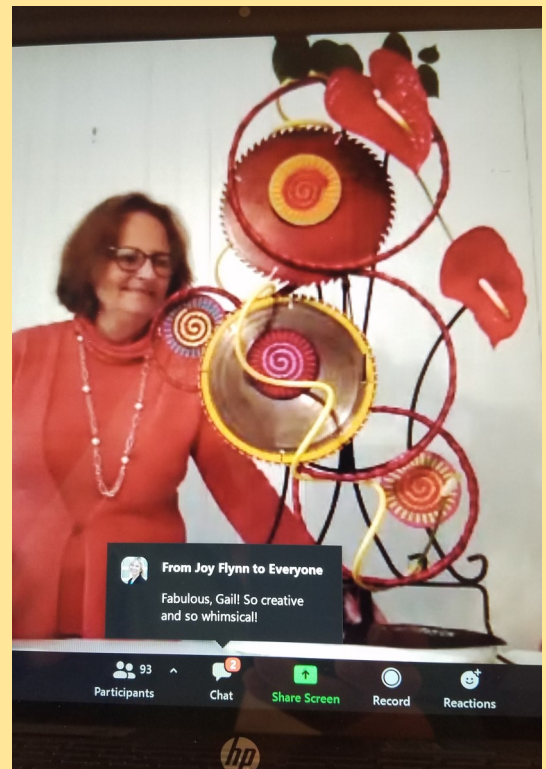


1. Determine location; is it completely outdoors, in a tent, on a porch or a combination of all three?
2. Staging; Schedule writer, once location is determined, will have to consider staging. If in a yard will designs be freestanding and therefore viewed from all sides or up against a hedge or foundation.
3. What is the duration of the show? A small standard show can be easily set up and taken down in one day. It requires just 3 design classes and at least 5 horticulture classes with a minimum of 20 specimens. Having no major awards, just BEST IN SHOW in both horticulture and design, simplifies the process.
4. Designers should use heavy, non breakable containers if possible. Weight can be added to secure the base by using sand and stone. Natural materials such as weathered wood are a good way to go.
5. It is suggested that schedule writer keep away from designs that can have balance issues such as cascade and petite (due to size as they may easily blow over if windy).



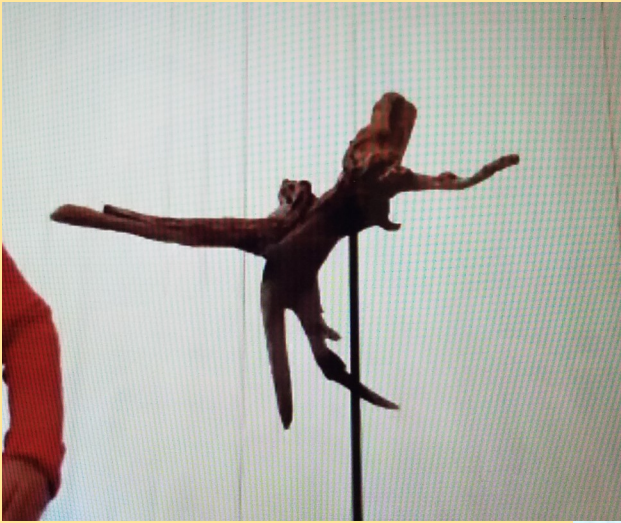
An Assemblage Design using saw blades, hoops, coasters, and a converted plant stand!

Some of the photos were taken from a laptop screen during the Zoom presentation.



Plant material is red anthurium and lemon leaf.





A piece of driftwood propped up on a metal stand looks like a design in flight. Abstracted aspidistra leaves and Bird of Paradise are added.



A Line Design with roses and japonica.



Flowers in urn are alstroemeria, scabiosa, stock, solidago and mini pom.



A Creative Mass design set on a wood piece.

Flowers include alstroemeria, azalea, gerbera daisy, mini button pom poms, scabiosa, solidago, spray roses, and umbrella pine.